



CONTACT: ipm@innovatecalgary.com • (403) 284-6400

Monoclonal antibody against human MS4A8B

Technology ID# 345.3

Background

University of Calgary researcher Dr. Julie Deans has recently produced a monoclonal antibody (mouse IgG2A) against human MS4A8B. MS4A8B is a member of the MS4A family expressed in epithelial cells found in various tissues, particularly lung and trachea. Importantly, MS4A8B is overexpressed in both prostate cancer and small cell carcinoma in lung, suggesting a potential role as a biomarker and/or therapeutic target in these diseases.

A quality antibody against MS4A8B could be valuable for both pre-clinical and clinical research applications. This anti-MS4A8B antibody detects an extracellular epitope, has no observed cross-reactivity, and has been used successfully for flow cytometry, immunoblotting, and immunoprecipitation. Dr. Deans – a leader in immunological research – has extensively characterized and used this antibody in her research.

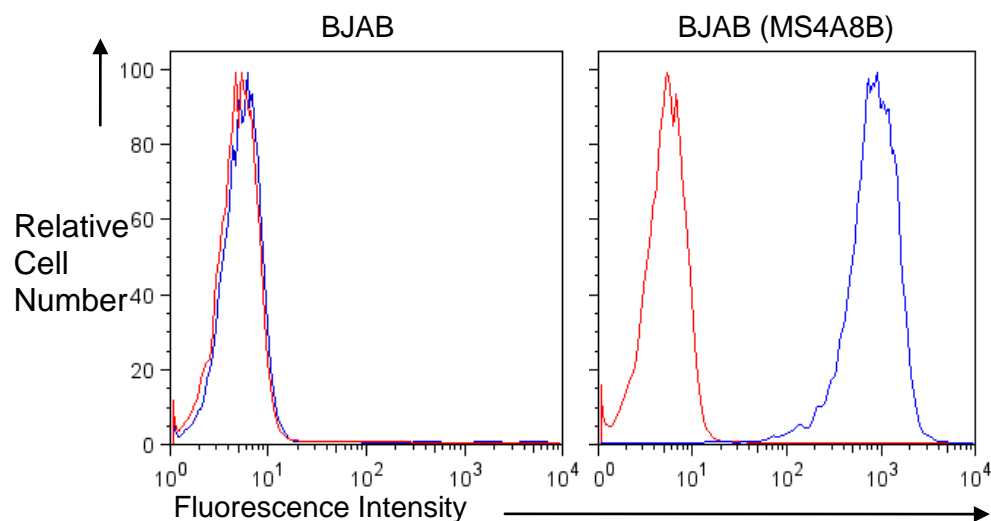


Figure 1: Specificity of Anti-MS4A8B was evaluated by flow cytometry (anti-MS4A8B in blue; isotype control in red) in BJAB-MS4A8B-GFP cells.

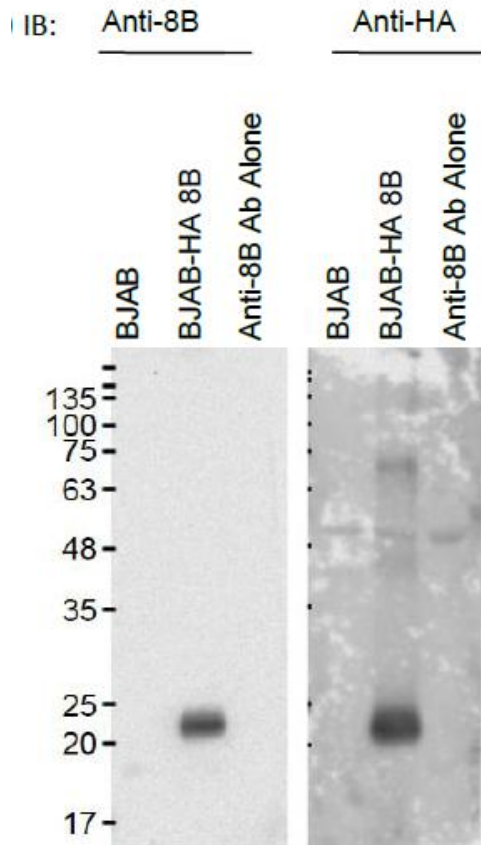


Figure 2: Specificity of Anti-MS4A8B was evaluated by immunoprecipitation from either BJAB-MS4A8B-HA or parental BJAB cells and immunoblotting with anti-MS4A8B (left panel) or with anti-HA (right panel).

Areas of Application

- Oncology
 - Prostate cancer
 - Small cell carcinoma (lung)

Competitive Advantages

- Extremely specific
- Well characterized
- Multiple applications (IB, IP, FC)
- Binds to extracellular domain
 - No need to permeabilize cells